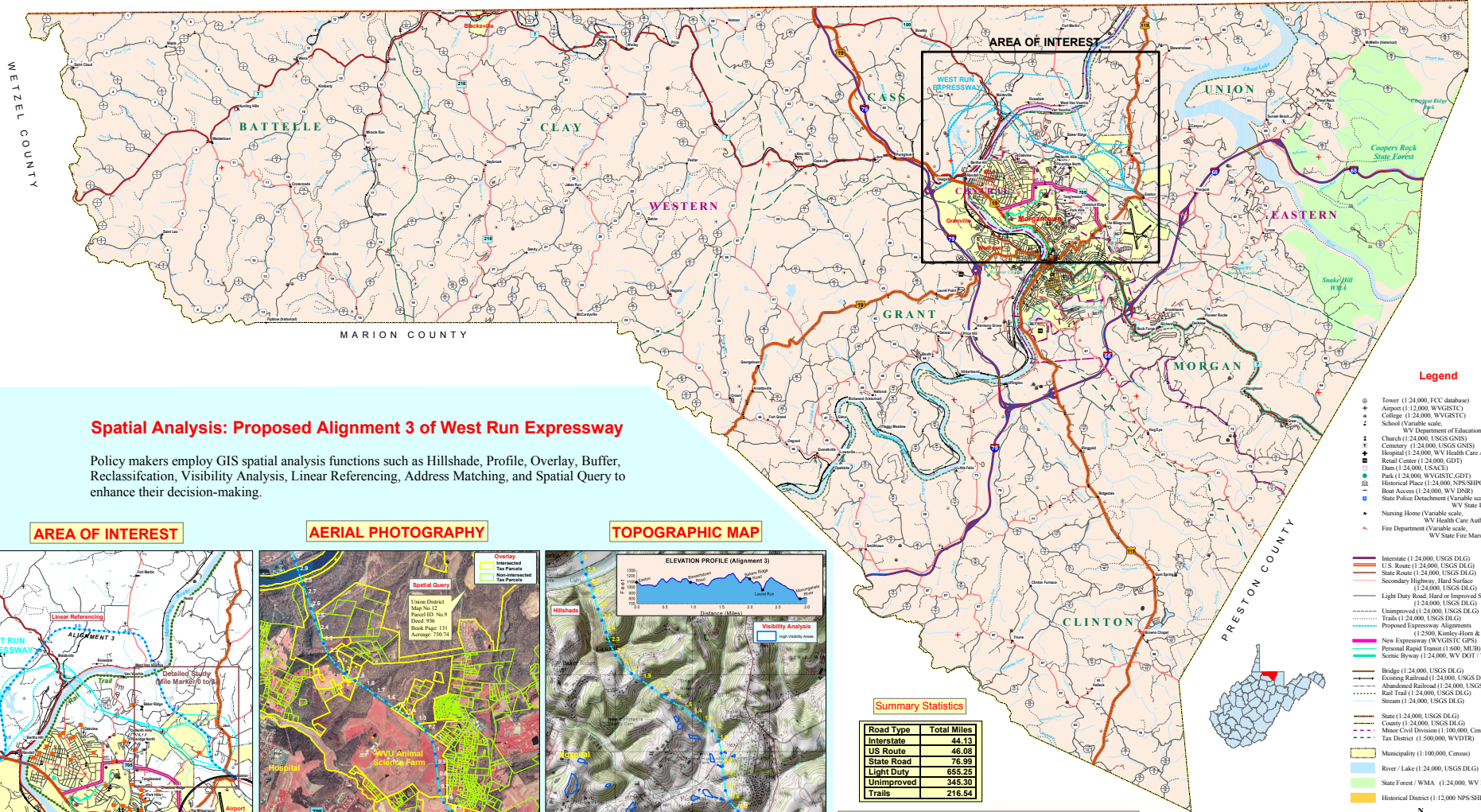


MONONGALIA COUNTY GENERAL HIGHWAY MAP

P E N N S Y L V A N I A



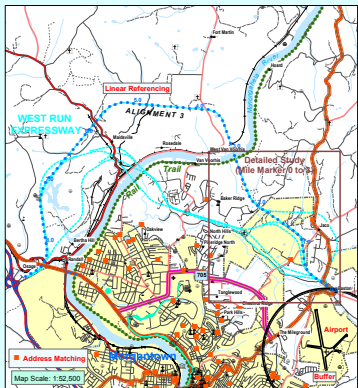
Spatial Analysis: Proposed Alignment 3 of West Run Expressway

Policy makers employ GIS spatial analysis functions such as Hillshade, Profile, Overlay, Buffer, Reclassification, Visibility Analysis, Linear Referencing, Address Matching, and Spatial Query to enhance their decision-making.

Legend

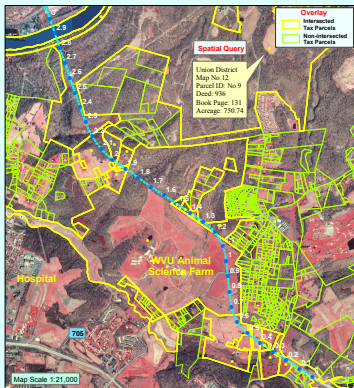
- ⊙ Tower (1:24,000, FCC database)
- ✈ Airport (1:24,000, WVGSTC)
- ⊕ College (1:24,000, WVGSTC)
- ⊙ School (Variable scale, WV Department of Education)
- ⊙ Church (1:24,000, USGS GNIS)
- ⊙ Cemetery (1:24,000, USGS GNIS)
- ⊙ Hospital (1:24,000, WV Health Care Authority)
- ⊙ Retail Center (1:24,000, GDT)
- ⊙ Dam (1:24,000, USACE)
- ⊙ Park (1:24,000, WVGSTC, GDT)
- ⊙ Historical Place (1:24,000, NPS/SHPO NRIS)
- ⊙ Boat Access (1:24,000, WV DNR)
- ⊙ State Police Detachment (Variable scale, WV State Police)
- ⊙ Nursing Home (Variable scale, WV Health Care Authority)
- ⊙ Fire Department (Variable scale, WV State Fire Marshal's Office)
- Interstate (1:24,000, USGS DLG)
- U.S. Route (1:24,000, USGS DLG)
- State Route (1:24,000, USGS DLG)
- Secondary Highway, Hard Surface (1:24,000, USGS DLG)
- Light Duty Road, Hard or Improved Surface (1:24,000, USGS DLG)
- Unimproved (1:24,000, USGS DLG)
- Trails (1:24,000, USGS DLG)
- Proposed Expressway Alignments (1:2500, Kamey-Horn & Assoc.)
- Personal Rapid Transit (1:600, MLI)
- Scenic Byway (1:24,000, WV DOT / WVGSTC)
- Bridge (1:24,000, USGS DLG)
- Existing Railroad (1:24,000, USGS DLG)
- Abandoned Railroad (1:24,000, USGS DLG)
- Rail Trail (1:24,000, USGS DLG)
- Stream (1:24,000, USGS DLG)
- State (1:24,000, USGS DLG)
- County (1:24,000, USGS DLG)
- Minor Civil Division (1:100,000, Census)
- Tax District (1:500,000, WVDT)
- Municipality (1:100,000, Census)
- River / Lake (1:24,000, WV DNR)
- State Forest / WMA (1:24,000, WV DNR)
- Historical District (1:12,000, NPS/SHPO NRIS)

AREA OF INTEREST



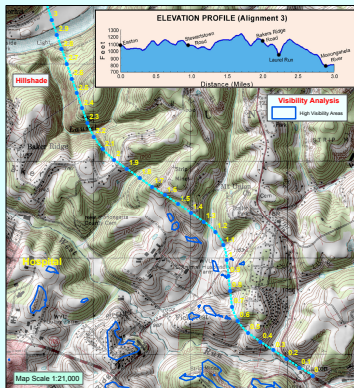
AREA OF INTEREST: Alignment 3 is linear referenced in miles from Easton (U.S. 119) to Osage (I-79). Inset map also shows Rail Trail survey points (orange squares) geocoded from street address. A 1-mile buffer (black) was created around the Morgantown Airport.

AERIAL PHOTOGRAPHY



AERIAL PHOTOGRAPHY: Tax Union District parcels (yellow) intersected by West Run Expressway (Alignment 3). Color infrared photography provides land use information. Tax parcel information can be extracted from the GIS database.

TOPOGRAPHIC MAP



TOPOGRAPHIC MAP: High visibility areas, locations where observers can view in barren conditions 30-50% of Alignment 3 between Mile Marker 0.0 (Easton) and 3.0 (Monongalia River), are shown in blue.

Summary Statistics

Road Type	Total Miles
Interstate	44.13
US Route	46.08
State Road	76.99
Light Duty	655.25
Unimproved	345.30
Trails	216.54

COMPUTER-GENERATED HIGHWAY MAP

A Geographic Information System (GIS) created the Monongalia County General Highway map by integrating georeferenced highway map data with other thematic layers, including topographic maps, tax parcels, and road engineering designs. The legend shows the maps scale and originator of each thematic layer, of which the most current and accurate spatial data were sought to create this computer-generated map.

