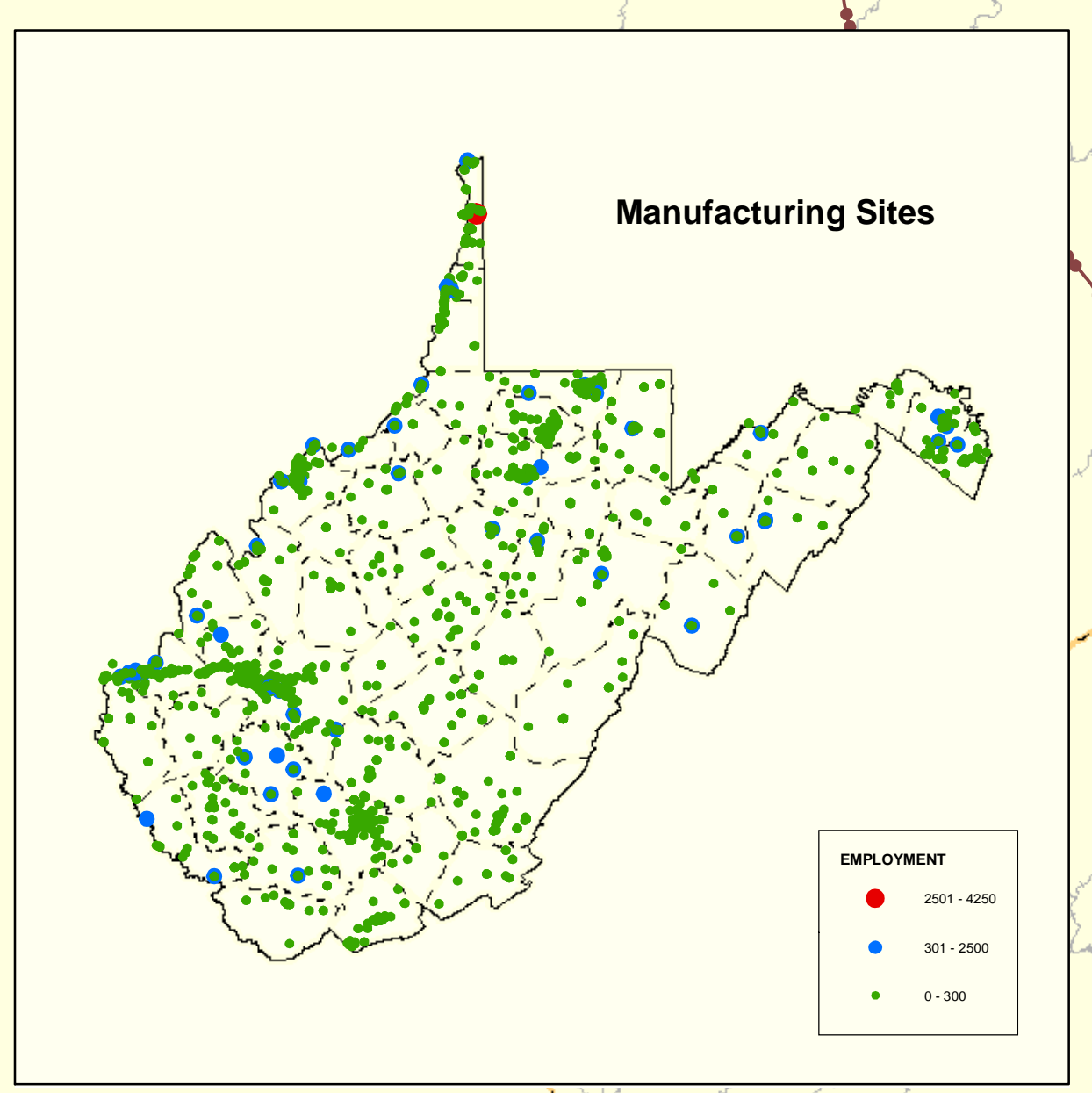
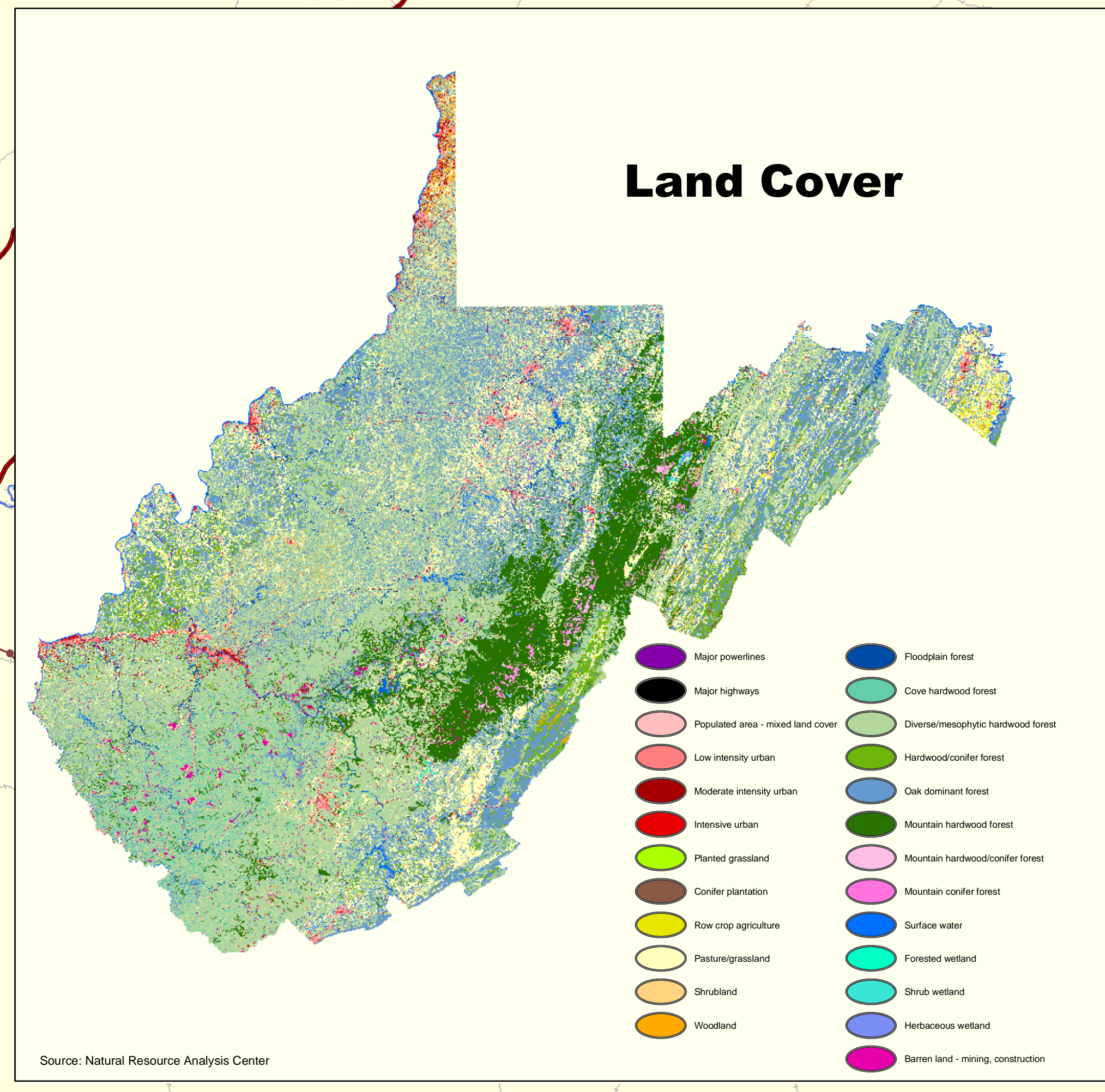
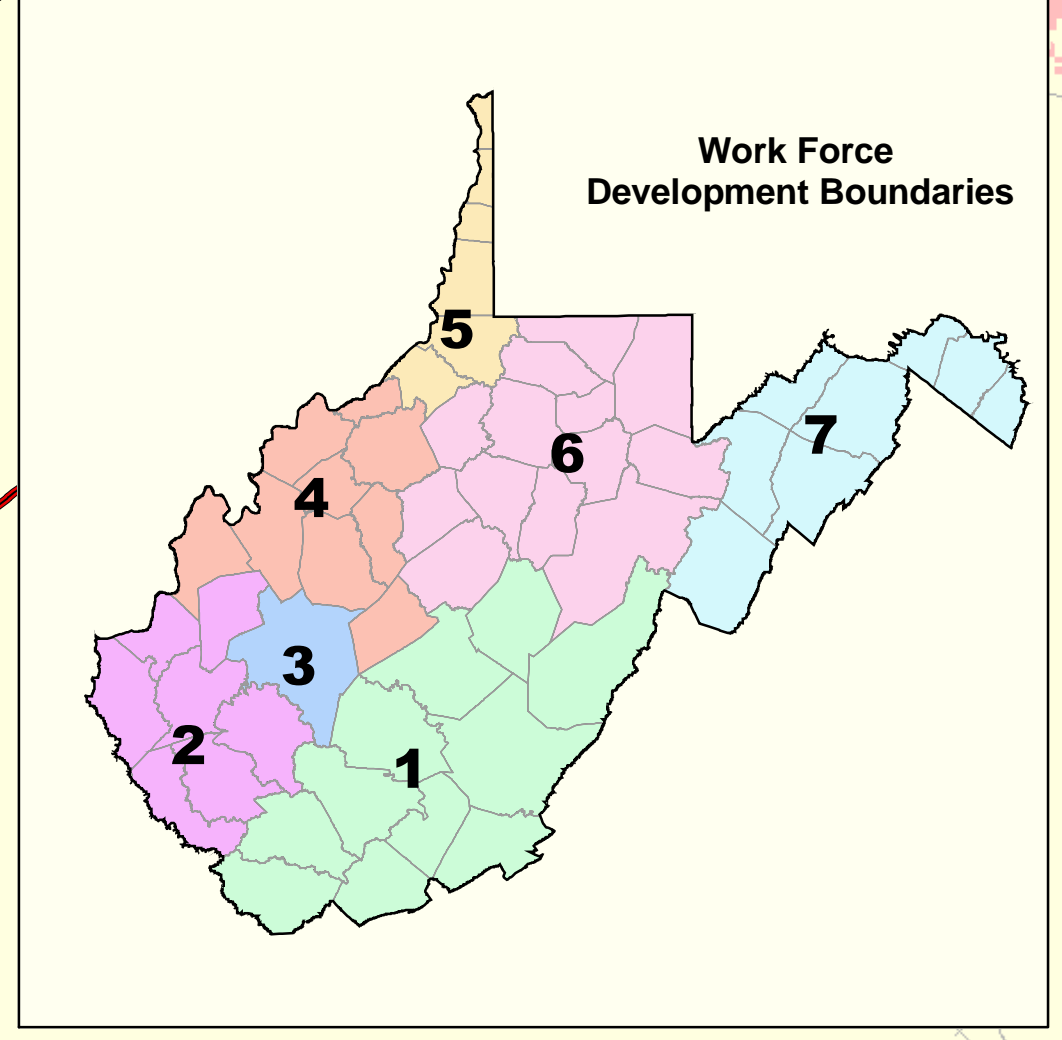
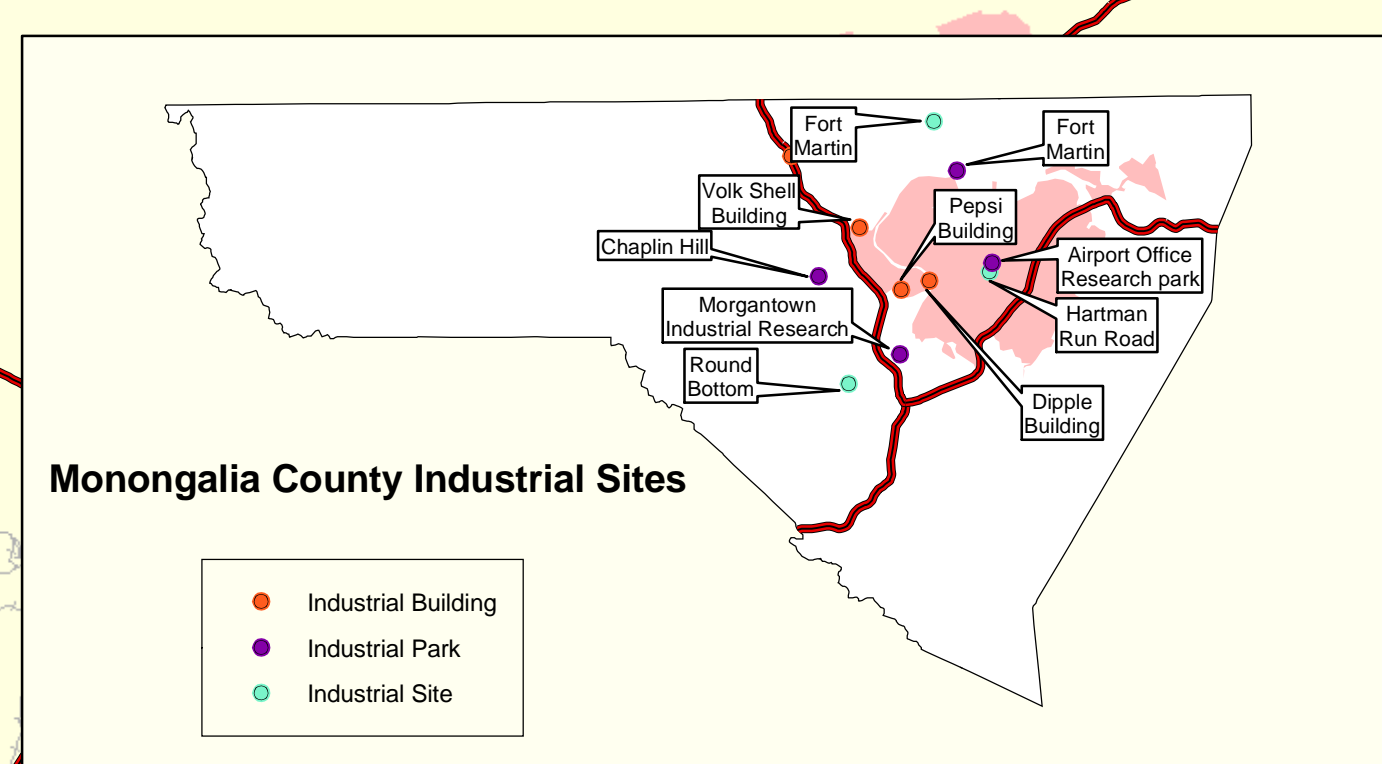
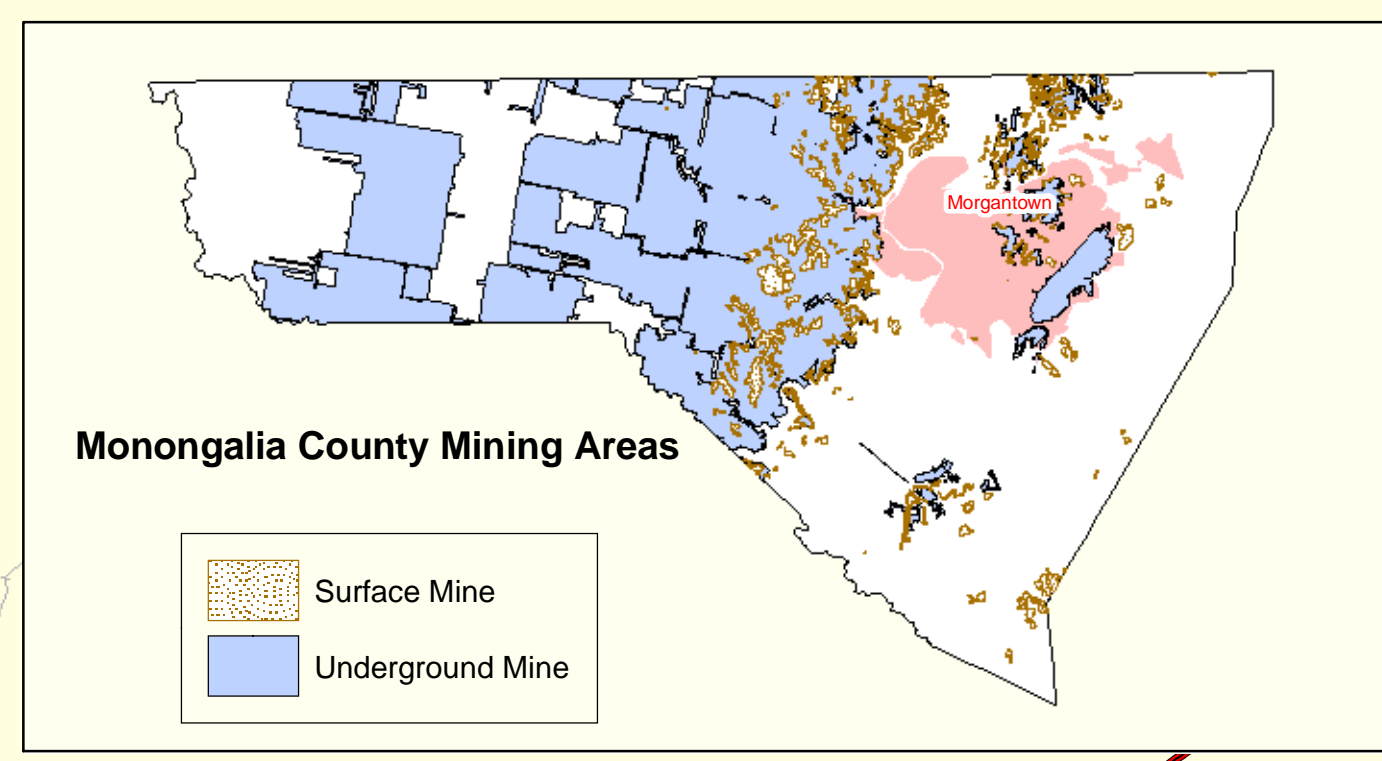
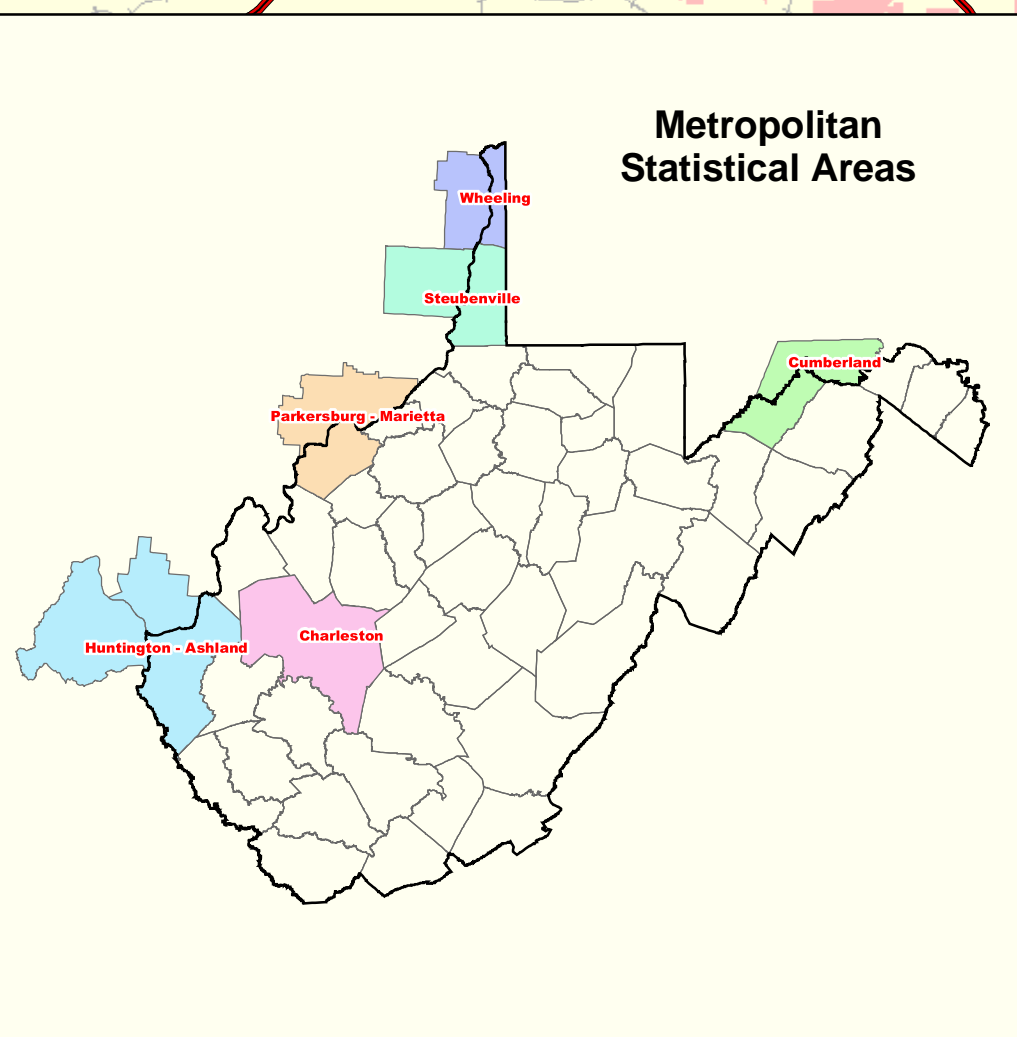
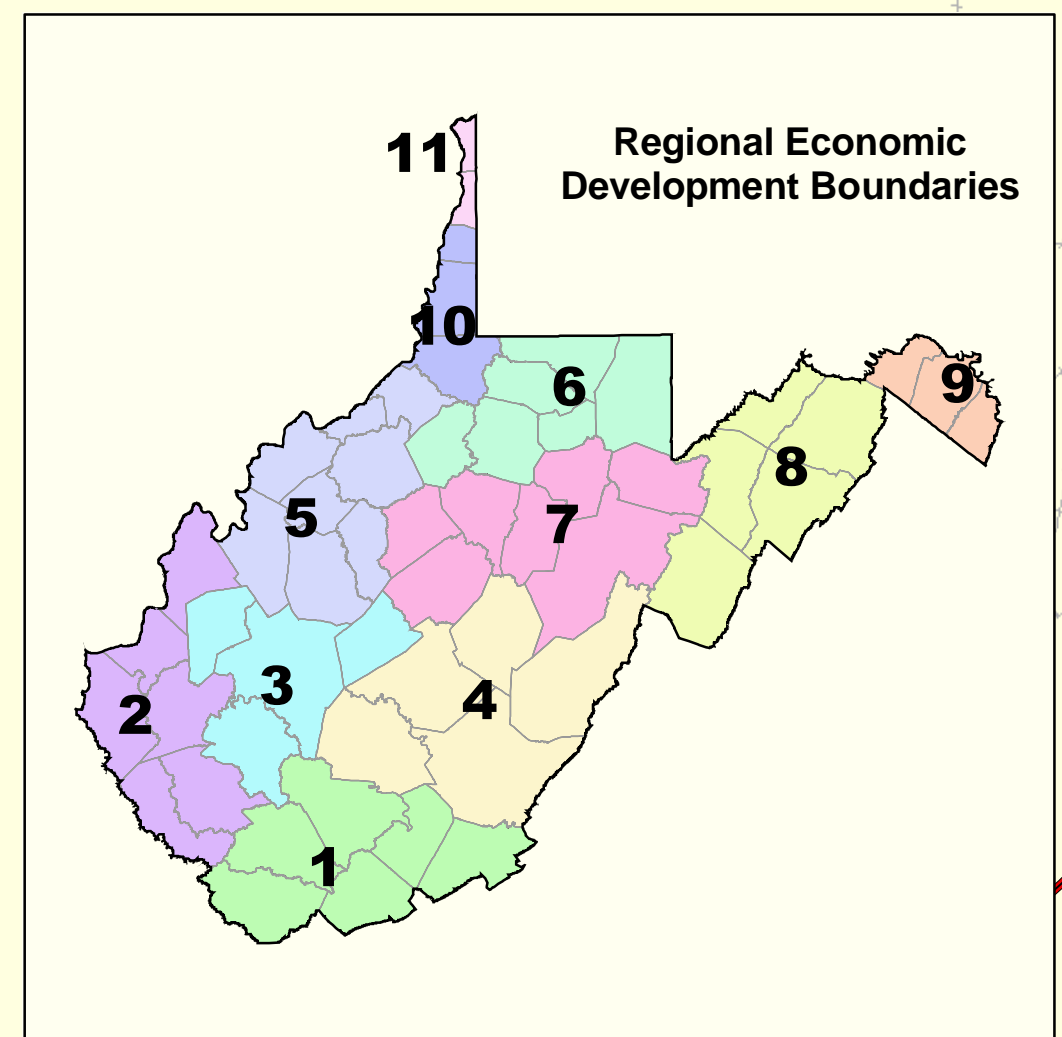


# Economic Development



**Legend**

- Foreign Trade Zone
- Port
- College / University
- Industrial Building
- Industrial Park
- Industrial Site
- Electric Services
- Airport
- Proposed Regional Airport
- Interstate
- 765 kV Transmission Line (Partial Coverage)
- Active Railroad
- Navigable Waterway
- Major River
- 100 Year Floodplain (Partial Coverage)
- Proposed Highway
- Existing, Proposed and Reclaimed Surface Mines (Partial Coverage)
- Empowerment Zone
- Enterprise Community
- City Boundary
- Non-Abatement PM10 Area
- Non-Abatement SO2 Area
- Major Water Body
- Wetland
- Urban Cluster
- Urbanized Area
- State Park, Forest and Wildlife Management Area
- National Park and Forest

Scale: 1:560,000  
April 2003

